

NB6T30SY / NBT30SY

REPLACES: 09.07.10

REVISED: 15.11.17

FITTING INSTRUCTIONS

TOYOTA KLUGER 10/06-08/10 63mm SERIES 2 NUDGE BAR AND 76mm NUGDE BAR VEHICLE FRONTAL PROTECTION SYSTEM (VFPS) FOR AIR BAG & ADR COMPLIANT VEHICLES

Check installation hardware before commencing.

1. Lift Bonnet
2. Remove grille fill panel from between headlamps and radiator support. (Eleven Plastic push pull clips)
3. Remove grille. Four plastic push pull clips and two 10mm head bolts. Pull forward and slide hand to bottom of grille. Working from the side, unclip by releasing centre of clip from bumper. **See Figure 1.**
4. Remove bumper cover. One 8mm head screw and one plastic clip (per side), six 10mm head screws from under front of vehicle to splash guards and 1 plastic clip from under grille. Gently push bumper cover rearward to release from clip where 8mm screw previously removed, pull top of bar away from guard of vehicle to unclip from guard retaining clip.
5. Remove polystyrene bumper support.
6. Remove six 14mm bolts from inside of alloy intrusion bar. Remove intrusion bar.
7. Remove two 10mm head bolts and two push pull plastic clips from centre splash guard. Allow to hang.
8. Fit 4mm steel mounting section over rear of alloy intrusion bar. Using inside of 6mm mounts on protection bar, minus 12mm (allowance for exterior steel mount) to outside of steel mounts, align mounts to evenly on intrusion bar. **See Figure 2.**
9. Mark and drill centre hole on rear and underside of mount. Exterior holes will align with standard holes for chassis mounting. Fit 3/8 x 1 1/4 Bolt and washer on wire, washer, spring washer and nut thru rear hole on mount and 3/8 nut and washer on wire, flat washer, spring washer and 3/8 bolt to lower hole. **FINGER TIGHTEN ONLY.**
10. Refit alloy intrusion bar to vehicle using original bolts. Centre bar and **TIGHTEN ALL BOLTS. See figure 3.**
11. Test fit external steel mount to outside of mount on vehicle to ensure external measurement of steel mounts match internal measurement of Alloy protection bar. Remove external steel mount.
12. With masking tape, protect paintwork on vent fins on outer vents of plastic bar. Fit plastic bar to vehicle in correct position and mark top section of vent to be trimmed. Remove from vehicle. Allow room to inside of mount for adjustment and 10mm to outside of mount for external steel mount. Trim bumper cover. **See figure 4.**
13. Remove masking tape and refit original equipment as per reverse of steps 2 to 5.



**WORLD'S BEST
ALLOY BULLBARS**

East Coast Bullbars (ECB Pty Ltd)

Tel: 07 3897 5700

Fax: 07 3283 1168

ecb@ecb.com.au www.ecb.com.au

29 Snook St
Clontarf QLD 4019
Australia

Po Box 122
Margate QLD 4019
Australia

14. Fit external steel mount using two 3/8 x 1 ½ bolts, flat washers, spring washers and nuts in top holes and 3/8 x 1 ½ bolts, flat washers, spring washers and nyloc nuts to bottom holes (bolt from bottom with spring washer and flat washer, flat washer and nyloc nut to top for best attachment). Check mounts are parallel and **TIGHTEN ALL BOLTS. See figure 5.**
15. Attach protection bar to outside of steel mounting system. Use 3/8 x 1 ½ bolts, nuts, flat washers and spring washers (supplied) for rear holes and 3/8 x 1 ½ bolts and washers on wire, flat washers, spring washers and nuts for front hole. **FINGER TIGHTEN ONLY.**
16. Align protection bar with vehicle. **TIGHTEN ALL BOLTS AND NUTS. See figure 6 and 7, 8 and 9** for side and front views.

ENSURE NUMBER PLATE IS CLEARLY VISABLE

Note: When fitting/refitting the licence plate to the vehicle, ensure there is no obstruction to licence plate vision in accordance with local authorities. If required relocate licence plate to an alternate location.

Further VFPS Notes:

- a) Do not attach VFPS to the vehicle using anchorages not intended for this purpose (e.g. engine mounting bolts).
- b) Do not use this product for any vehicle make or model, other than those specified by the VFPS manufacturer.
- c) Do not remove the plaque or label from the VFPS.
- d) Do not modify the structure of the VFPS in any way.
- e) No accessory or fitment should project forward of the VFPS forward profile.
- f) **ENSURE THESE INSTRUCTIONS ARE LEFT WITH VEHICLE OWNER AND/OR OPERATOR.**

IMPORTANT INFORMATION

Periodically check bolts and nuts for correct tightness, especially if travelling on rough roads

FITTING KIT

2 – External steel mounts	12 – 3/8 x 1 ½ bolts
2 – Internal steel mounts	4 – 3/8 x 1 ½ bolts and washers on 300mm wire
10 – 3/8 nuts	26 – 3/8 flat washers
4 – 3/8 nyloc nuts	16 – 3/8 spring washers
2 – 3/8 nuts and washers on 300mm wire	



**WORLD'S BEST
ALLOY BULLBARS**

East Coast Bullbars (ECB Pty Ltd)

Tel: 07 3897 5700

Fax: 07 3283 1168

ecb@ecb.com.au www.ecb.com.au

29 Snook St
Clontarf QLD 4019
Australia

Po Box 122
Margate QLD 4019
Australia



Figure 1: Lower view of grille clip. Push centre up



Figure 3: Internal mount fitted to vehicle



Figure 5: External mounts fitted with protection bar removed for photo. NOTE lower nut and washer combination.

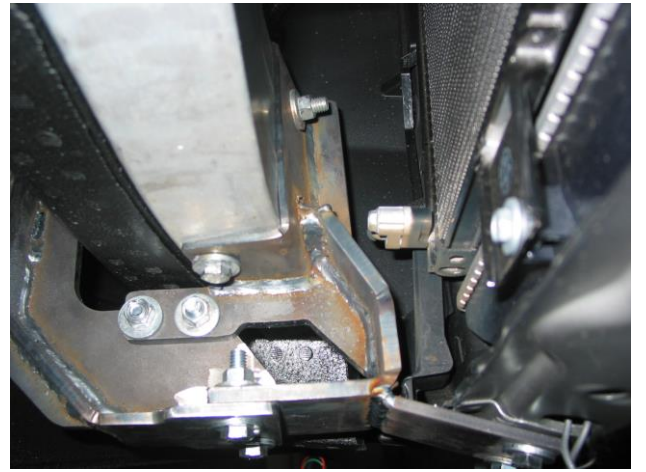


Figure 2: Internal steel mount attached to Alloy intrusion bar as fitted to test vehicle. BTB Mount shown.



Figure 4: Cut out in plastic bumper. Rear of drivers side shown.



**WORLD'S BEST
ALLOY BULLBARS**

East Coast Bullbars (ECB Pty Ltd)

Tel: 07 3897 5700

Fax: 07 3283 1168

ecb@ecb.com.au www.ecb.com.au

29 Snook St
Clontarf QLD 4019
Australia

Po Box 122
Margate QLD 4019
Australia

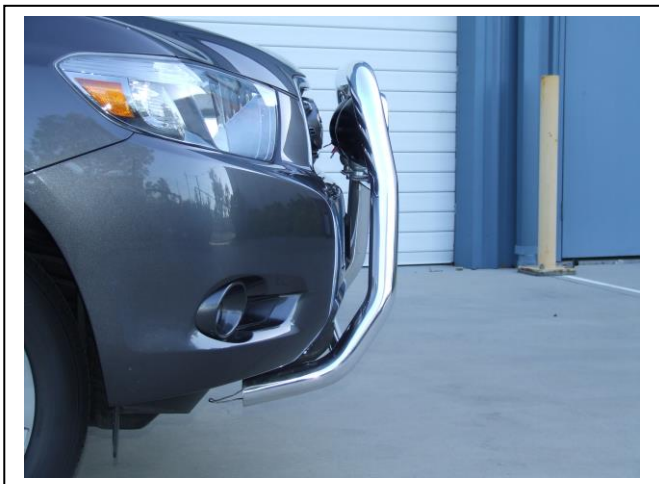


Figure 6: Series 2 Nudge Bar side view



Figure 7: Series 2 Nudge Bar front view



Figure 8: 76mm Nudge Bar side view



Figure 9: 76mm Nudge Bar front view



**WORLD'S BEST
ALLOY BULLBARS**

East Coast Bullbars (ECB Pty Ltd)

Tel: 07 3897 5700

Fax: 07 3283 1168

ecb@ecb.com.au www.ecb.com.au

29 Snook St
Clontarf QLD 4019
Australia

Po Box 122
Margate QLD 4019
Australia

We value your comments

Dear Fitter,

ECB would like to know how you went with the installation of this product. We value your comment and may need to contact you to clarify some details so please complete your contact details clearly.

We would appreciate if you could complete as many of the following details as possible.

Your Name:	Your contact No.
Product Part No.	Product Invoice No.
Product Description:	Make, model, and year of vehicle:
Product Work Order No.	Company your from/Company product purchased from:

Date of Fitment: ____/____/____

Was the fitting hardware supplied complete?

Yes

☐

No

☐

If no what was not supplied

Did the installation go well?

Yes

☐

No

☐

Please provide comments

Please draw diagrams if you need to.

Post to

Reply Paid 122

PO Box 122

Margate QLD 4019

Fax to

(07) 3283 1168



**WORLD'S BEST
ALLOY BULLBARS**

East Coast Bullbars (ECB Pty Ltd)

Tel: 07 3897 5700

Fax: 07 3283 1168

ecb@ecb.com.au www.ecb.com.au

29 Snook St
Clontarf QLD 4019
Australia

Po Box 122
Margate QLD 4019
Australia



WORLD'S BEST
ALLOY BULLBARS

East Coast Bullbars (ECB Pty Ltd)

Tel: 07 3897 5700

Fax: 07 3283 1168

ecb@ecb.com.au www.ecb.com.au

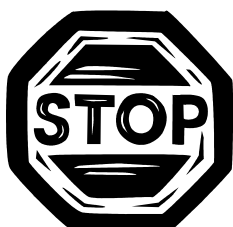
29 Snook St
Clontarf QLD 4019
Australia

Po Box 122
Margate QLD 4019
Australia

DESPATCH CHECKLIST NB6T30SY / NBT30SY

Work Order #		See other side of this page for photos of all mounts
Finish:		
Transport:		
Due Date:		

- ☐ 2 – External steel mounts
- ☐ 2 – Internal steel mounts
- ☐ 1 – Bolt Kit



Is this product “the best it can be” Yes _____/_____
Wrapper's initials / Checker initials

If **NO** fix before continuing

All parts checked and completed by:

Nut and bolts: _____ Date ____/____/____

Order control: _____ Date ____/____/____

Final wrap check: _____ Date ____/____/____



**WORLD'S BEST
ALLOY BULLBARS**

East Coast Bullbars (ECB Pty Ltd)

Tel: 07 3897 5700

Fax: 07 3283 1168

ecb@ecb.com.au www.ecb.com.au

29 Snook St
Clontarf QLD 4019
Australia

Po Box 122
Margate QLD 4019
Australia

